

Murky Past - *Bright Future* !?!

The best accounting of the erosion and sedimentation conditions (*murky past*) of the Nemadji River watershed was completed through joint efforts by Federal agencies, Wisconsin, Minnesota and citizens in 1998. The recommendations emphasized the coordination of land use practices and management among land users. Watershed management recommendations included management by small drainage areas and coordinated forestry management.

In the years since that report was released Douglas County Land & Water Conservation Department (LWCD) and the Carlton County Soil and Water Conservation District (SWCD) have provided leadership to watershed management efforts. Education, technical and financial assistance have been used to implement practices and improve conditions but time and money have limited the watershed-wide coordination necessary to engage enough private land owners for measureable results.

The *bright future* can begin in 2016 with renewed efforts and funding from the Wisconsin Department of Natural Resources. Douglas County LWCD and Carlton County SWCD are collaborating on efforts in both states and the missing component is your participation. Information about land and water stewardship and watershed planning projects will be available at the upcoming Nemadji Watershed Informational Meeting.

Learn from your neighbors what has been working and what is yet to be done. We want to know about your goals for your land and provide assistance in taking a watershed approach to aligning your goals with the capabilities.

With your participation the future of the Nemadji River watershed can be bright – if not now, then when?

“A watershed approach is used to inform decisions, it does not make decisions”

Watershed Approach Handbook



What sub watershed do you live in ???

Nemadji Watershed Informational Meeting

May 4, 2016 6 - 8 pm

Superior Town Hall, 4917 Highway 35

Contact: Christine Ostern 395-1380 or Sue O'Halloran 398-6708

Free Native Plants !!!



City of Superior

In 2004 the Stormwater Ordinance creating a Storm Water Utility was adopted. The utility was created to manage, control, and minimize the adverse effects of stormwater runoff in a fair and cost effective manner. Program areas:

- ◆ Public Education and outreach
- ◆ Public Participation
- ◆ Illicit Discharge Detection & Elimination
- ◆ Construction Site Pollutant Control
- ◆ Stormwater management
- ◆ Pollution Prevention

Take a Watershed Approach...

Douglas County does. For the past few years the Land and Water Conservation Department has coordinated an assessment of all drainages within the Lake Superior Basin including the Nemadji River watershed. Guided by a diverse stakeholder group and funding the effort has provided a foundation for a watershed-based plan that will integrate with other county and town comprehensive plans. Working with the Wisconsin Department of Natural Resources AOC and the Carlton SWCD Douglas County proposes to improve outcomes and increase benefits associated with wetland and stream restoration and protection projects.

Carlton Soil and Water Conservation District (SWCD) does. This construction season they plan to complete a stream restoration project on a tributary to the sediment impaired Deer Creek. In the 1970's, sediment retention structures were installed in several Nemadji sub watersheds in Carlton County. These structures have passed their desired lifespan, and some have failed. Carlton County Department of Transportation and SWCD have completed inventories of the Carlton Nemadji watershed culverts, and together are seeking funding to replace them. Civic engagement has been a priority and school visits and conservation tours are planned.

A key land management recommendation to reduce soil erosion and sediment in the Nemadji Watershed is to **Slow the Flow** of water runoff entering streams and rivers after storm events. This is where you can play a role. The cumulative effects of your efforts in the watershed can make a difference.

Do you have a potential project site?

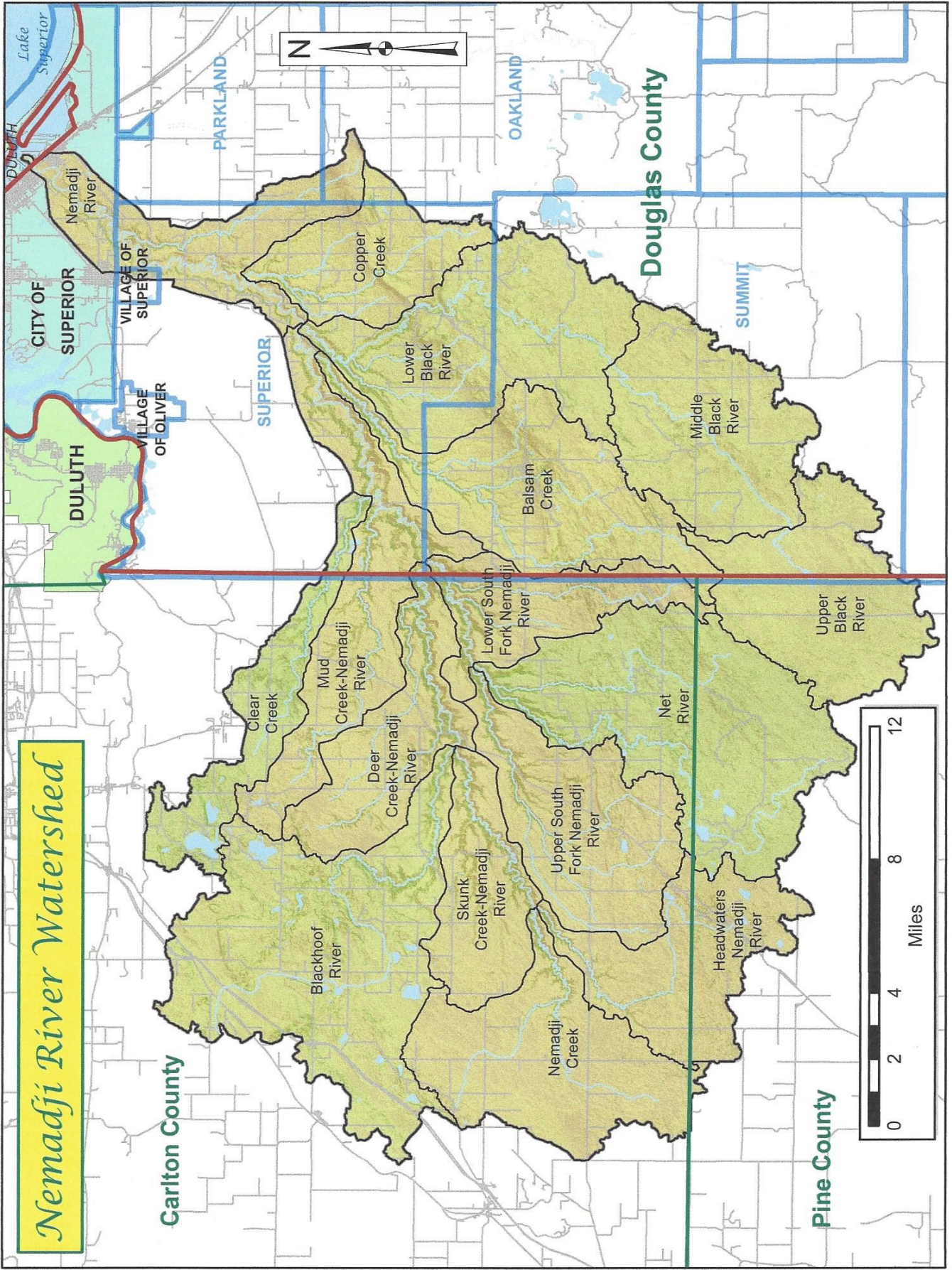


SUPERIOR

WISCONSIN

Living up to our name.

Nemadji River Watershed



Carlton County

Douglas County

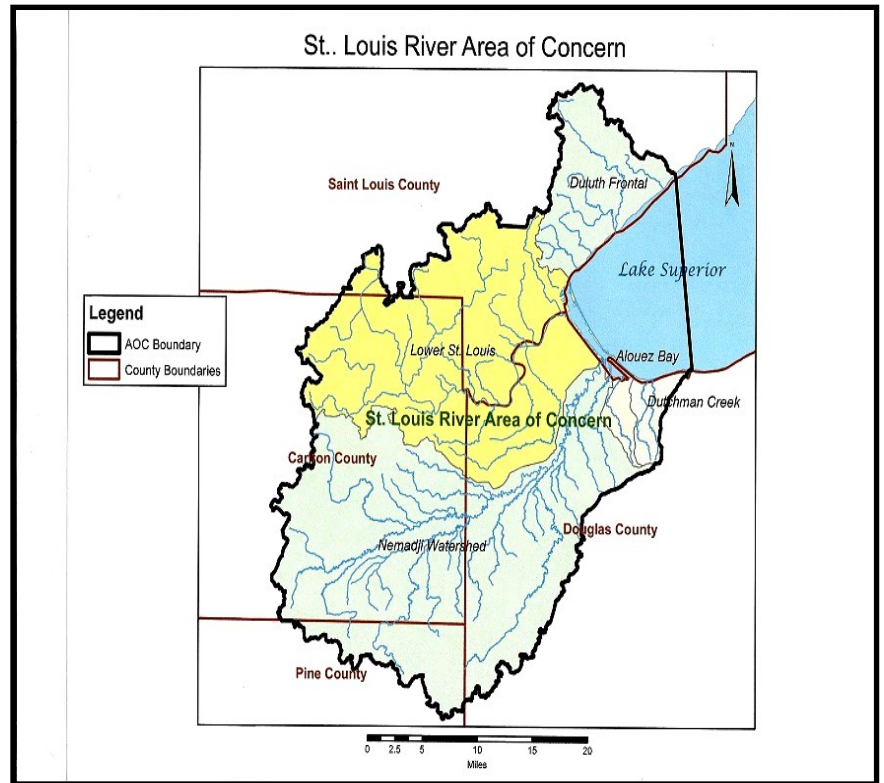
Pine County



Area of Concern (AOC)

The Nemadji watershed is part of the St. Louis River AOC because of accelerated erosion and sedimentation in the watershed due to land use practices dating back to the mid 1800's.

WDNR AOC and Douglas County seek your input to develop a Wisconsin implementation strategy that will inform landowners and engage Minnesota watershed partners. Training workshops and watershed tours are planned .



Douglas County LWCD

Courthouse Rm 206

1313 Belknap St

Superior, WI 54880